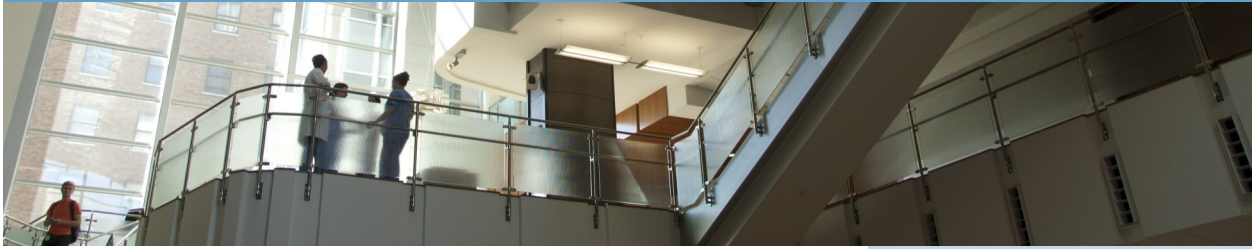


Opportunity in Public Health Sciences

Biostatistics Faculty Position



The Washington University School of Medicine has a strong team of public health researchers and an outstanding record of biomedical and social science research, from biology to genomics, social determinants of health and population sciences. The diverse faculty in the [Division of Public Health Sciences](#), Department of Surgery, collaborates with departments across the medical and academic campuses through teaching, mentoring and research projects.

Growing comparative effectiveness and outcomes research programs now offer opportunities for additional biostatistical collaboration. These ongoing projects generate a range of methodological issues that lend themselves to statistical resolution by faculty statisticians focused on methods development and application based on real world data issues. We seek faculty who will simultaneously collaborate and develop their own research program in applied methods.

The Division of Public Health Sciences is rich with opportunity for innovative research. We have recently been awarded funds for additional [disparities research and outreach in our community](#), a region of the country with exceptional poverty, obesity, low tobacco taxes and excess cancer burden. We have a [transdisciplinary research center](#) addressing cancer risk across the life course and across generations, from conception to workplace and survivorship. The Siteman Cancer Center [Prevention and Control program](#) brings together more than fifty investigators who are studying the relations among biological, genetic, psychological, and epidemiological factors. Studies range from genetic investigations to clinical outcomes and community-based participatory research.



To apply, send a cover letter, curriculum vitae and professional reference list by email to leightonc@wudosis.wustl.edu or mail to Graham A. Colditz, MD, DrPH, Chief, Division of Public Health Sciences, Department of Surgery, Washington University School of Medicine, 660 S. Euclid Ave., Campus Box 8100, St. Louis, MO 63110. Applications will be accepted until the position is filled. Washington University School of Medicine is an equal opportunity employer.



Washington University offers excellent benefits and competitive salaries. A start-up package accompanies faculty positions, with value depending on the rank of the appointment. Faculty positions offer the opportunity to collaborate with clinicians, pathologists, geneticists, imaging scientists, epidemiologists, social and behavioral scientists, and other faculty members on both the academic and medical campuses. Faculty have protected time to develop externally-funded research and participate in teaching.

Position Requirements

- Record of research excellence
- Excellent oral and written communication skills
- Strong interest in teaching and mentoring graduate students
- Strong desire as well as demonstrated ability to collaborate with research investigators in public health and/or medical fields of study
- Doctoral degree in biostatistics, statistics or an equivalent